

**MARY  
TAYLOR  
WINE**

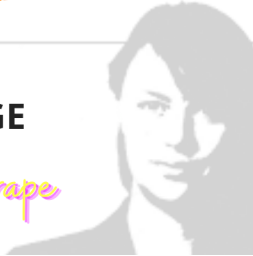


**ANJOU ROUGE**

*Think outside the grape*

Delightfully  
uncomplicated, with a  
lush roundness and  
harmonious tannins that  
leave you with dark and  
lively berry fruit notes

**Sustainably  
Farmed**



**MARY  
TAYLOR  
WINE**

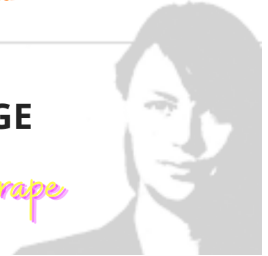


**ANJOU ROUGE**

*Think outside the grape*

Delightfully  
uncomplicated, with a  
lush roundness and  
harmonious tannins that  
leave you with dark and  
lively berry fruit notes

**Sustainably  
Farmed**



**MARY  
TAYLOR  
WINE**



**ANJOU ROUGE**

*Think outside the grape*

Delightfully  
uncomplicated, with a  
lush roundness and  
harmonious tannins that  
leave you with dark and  
lively berry fruit notes

**Sustainably  
Farmed**



**MARY  
TAYLOR  
WINE**



**ANJOU ROUGE**

*Think outside the grape*

Delightfully  
uncomplicated, with a  
lush roundness and  
harmonious tannins that  
leave you with dark and  
lively berry fruit notes

**Sustainably  
Farmed**

